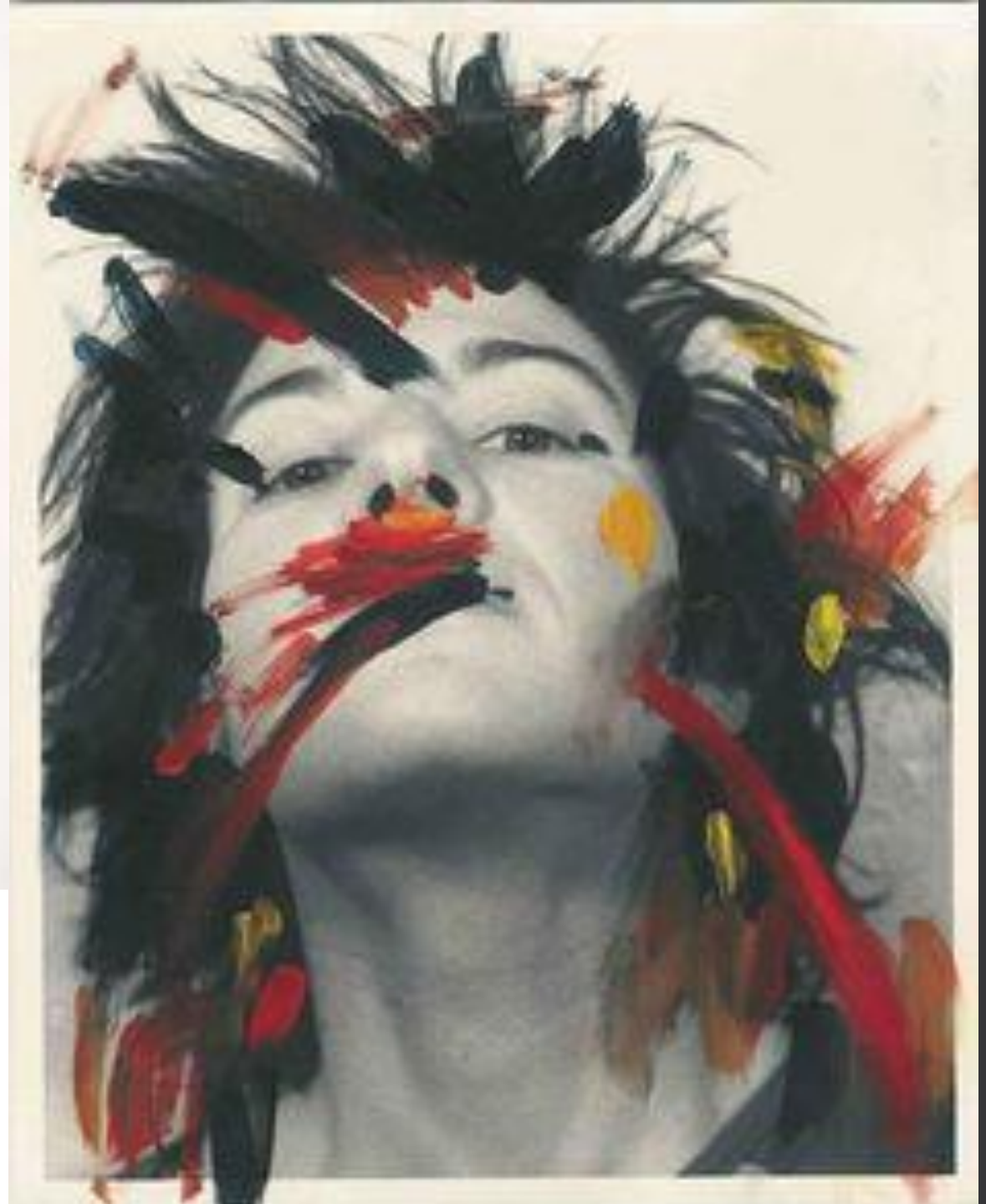


# Experimental Portraiture

A Level Photography

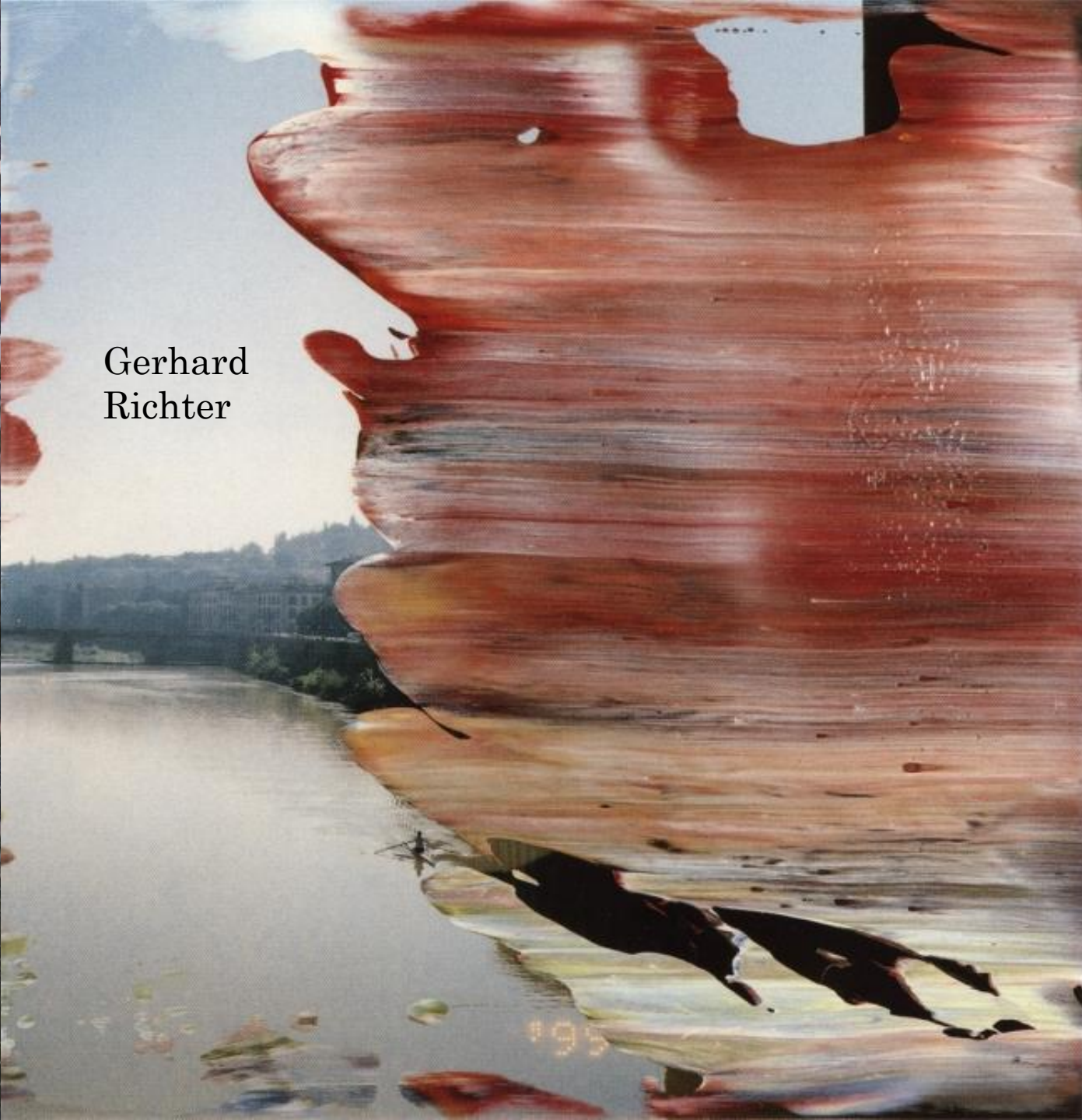


2. Kallmann  
A. Kallmann





Gerhard  
Richter





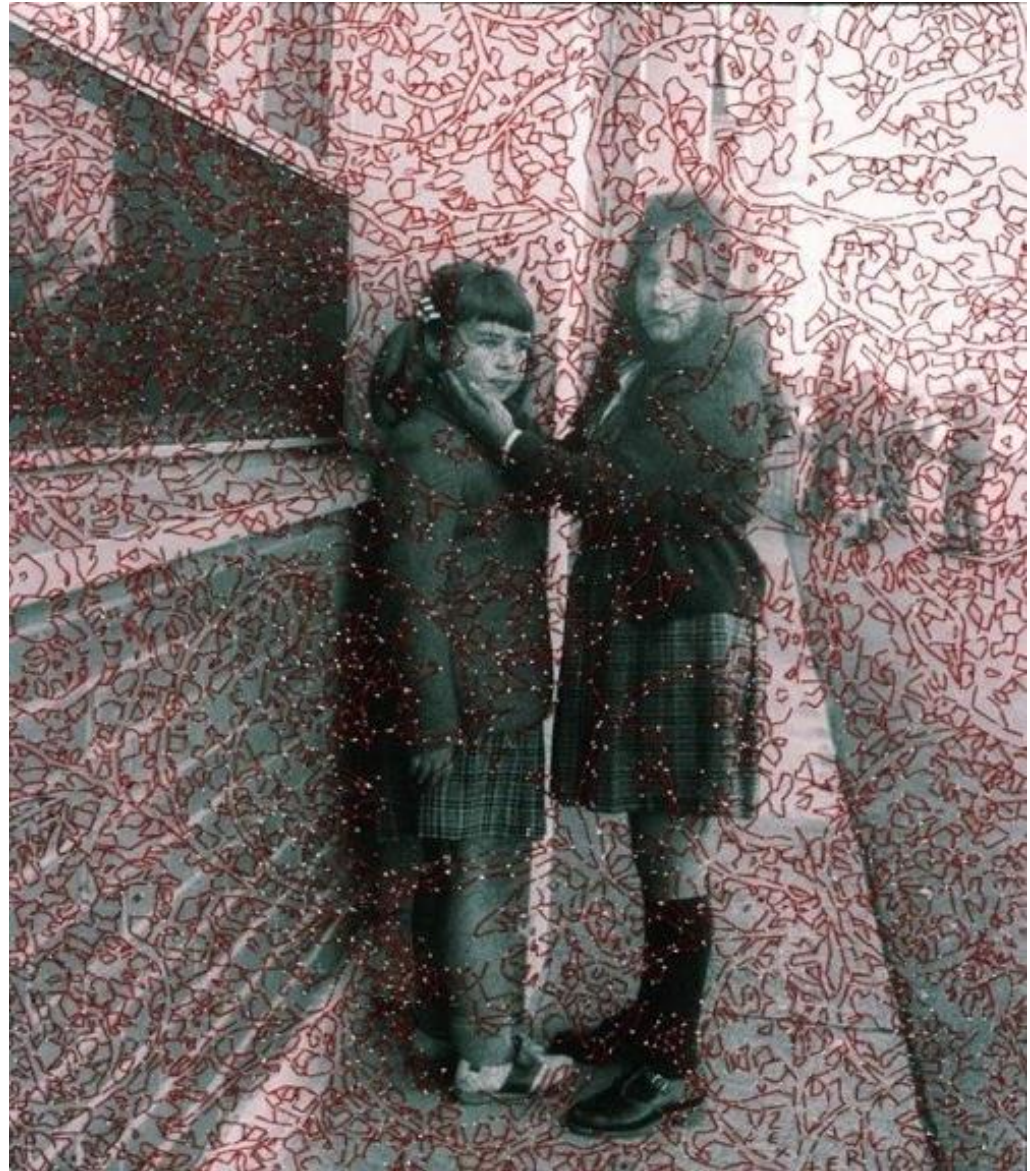
Charlotte  
Carson

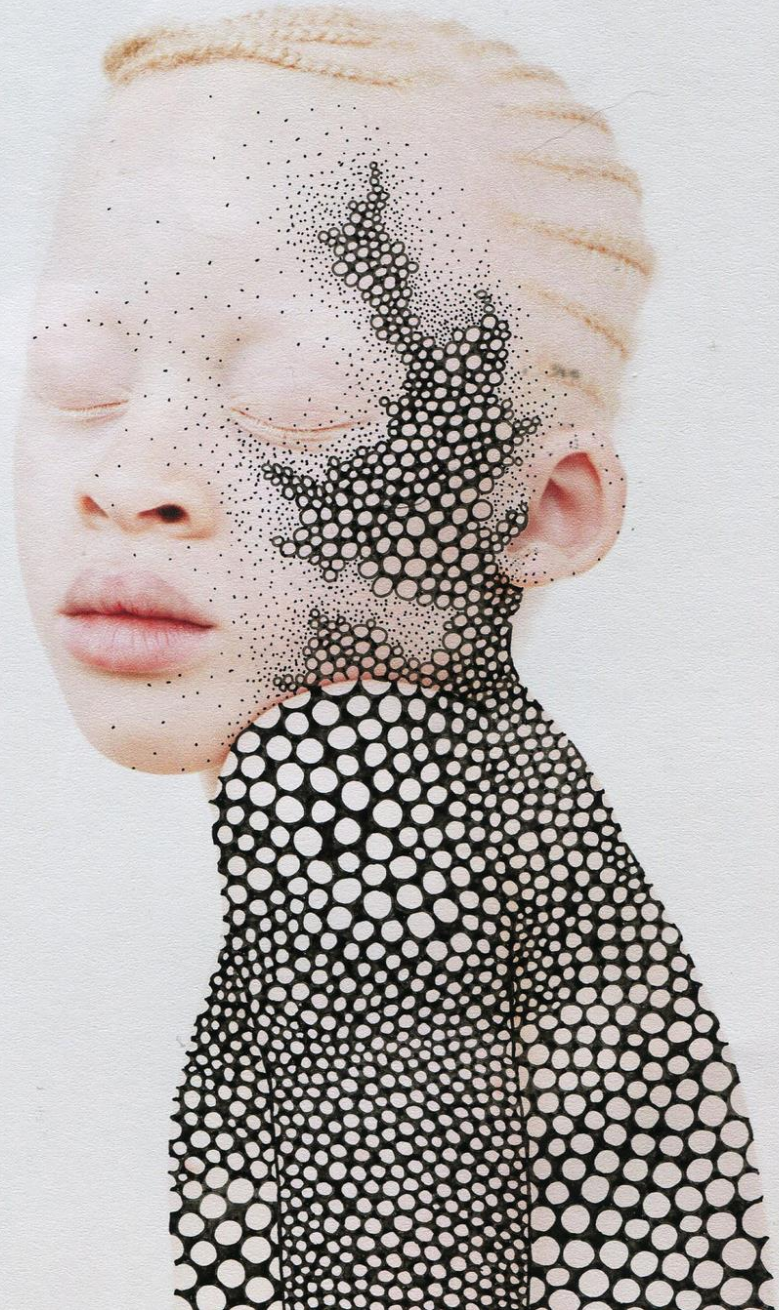
[opposite page]  
KAAN wears jumper and  
skirt by JW ANDERSON

[this page]  
BETHANY wears collar  
by TOM COOTE; dress by  
STELLA MCCARTNEY

hair DUFFY at TIM  
HOWARD MANA RIGENT  
make-up FRANCIS LE at  
ART + COMMERCE; styling  
KARA COMBETTES  
models BETHANY at  
NEXT, CHARLOTTE at  
D&G, CHRISTOPH at  
EUGENE TOMPKY at  
WILHELMINA, HERBERT  
at WOMEN EXPRESS  
KAAN at RED, MILLER  
at BOOT, SEN at FORD  
photographic assistants  
JOFF HENKESON, KIM  
REINBERG  
styling assistants  
ELIZABETH FRASER,  
RELI, DANIEL, KILLEY  
hair assistants PETER  
MATTELANO,  
YUKO SATO  
make-up assistant  
HIROKO TAKADA  
casting KIRWAN at KIM  
at HOUSE OF MARTIN

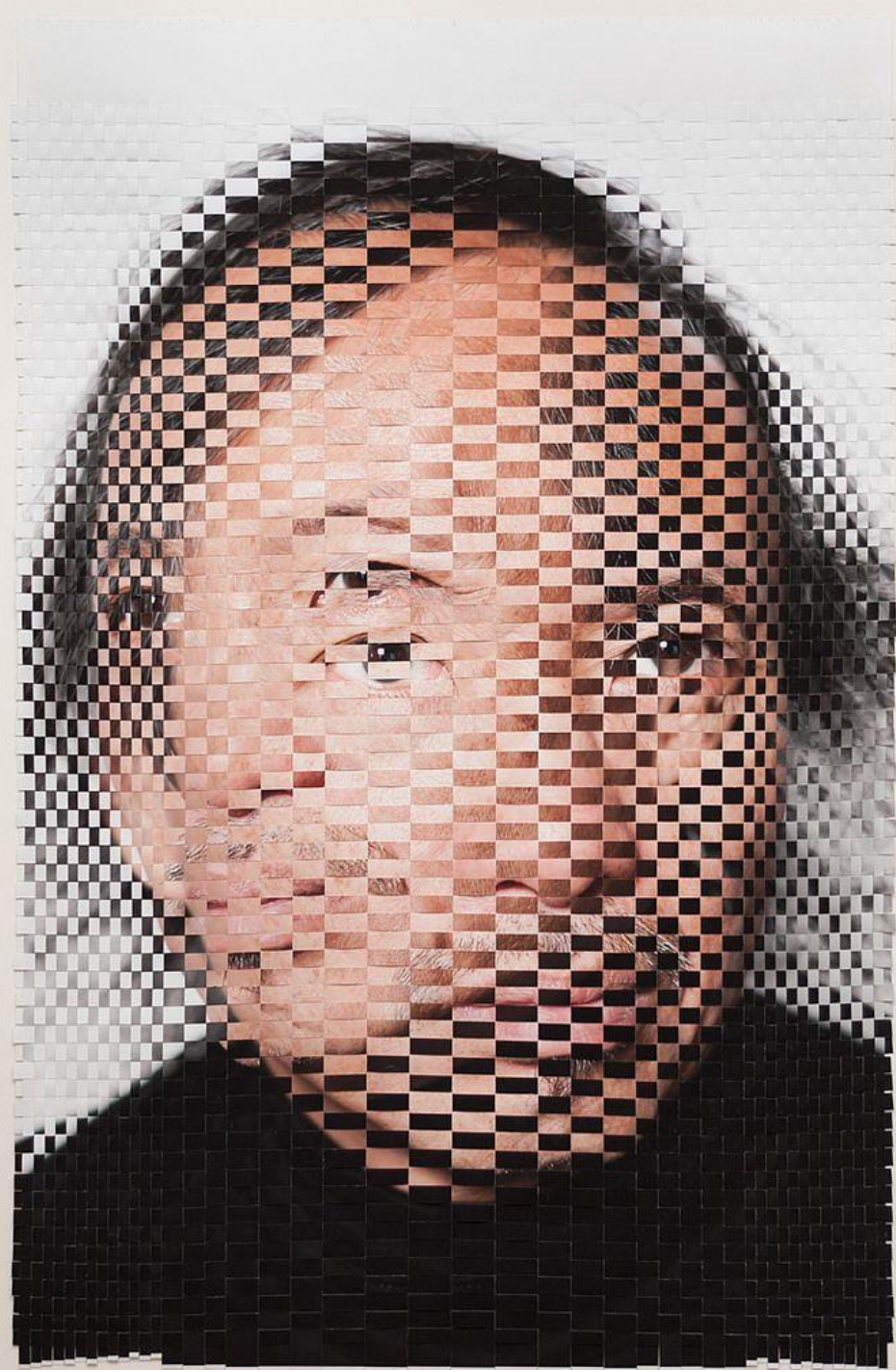






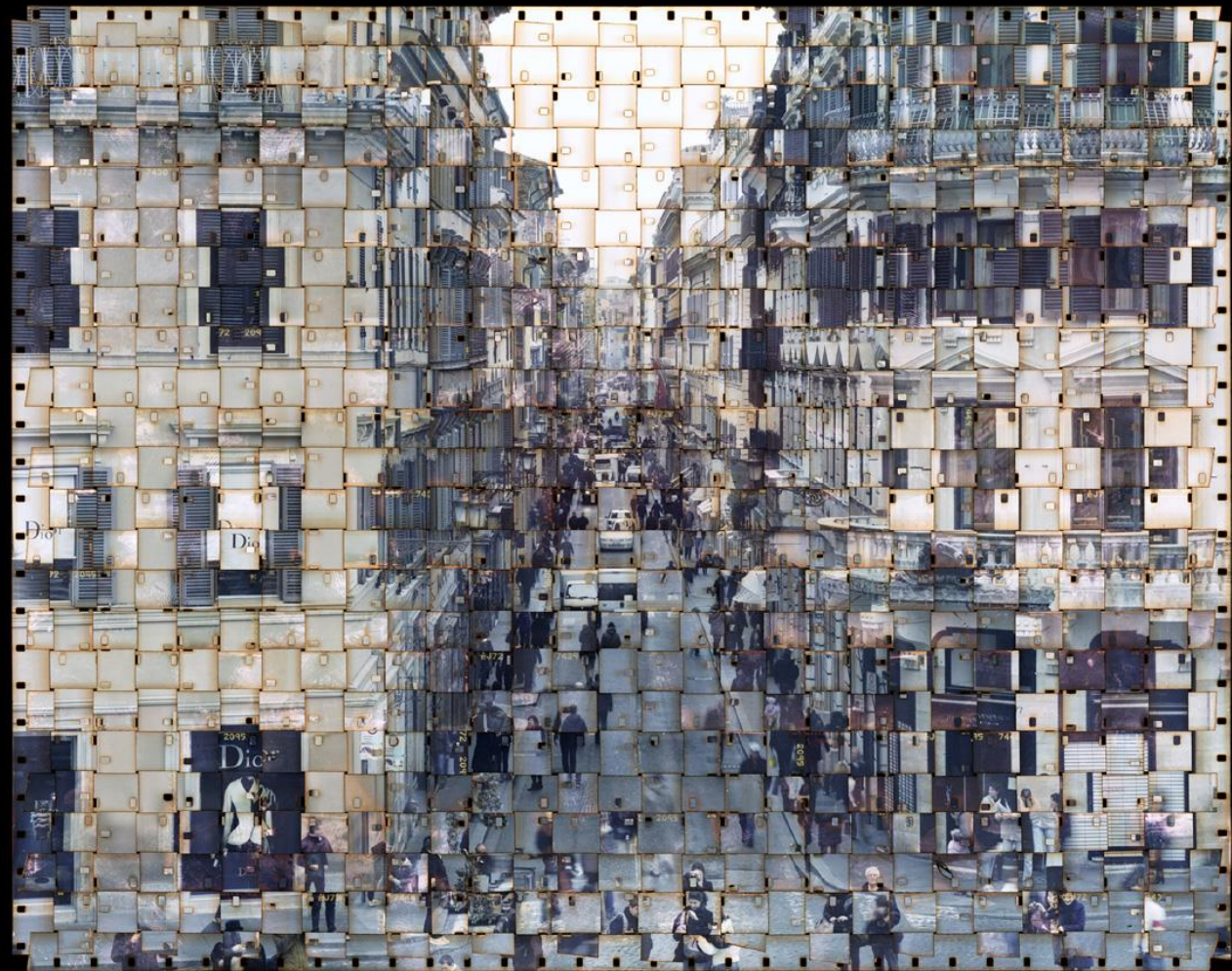




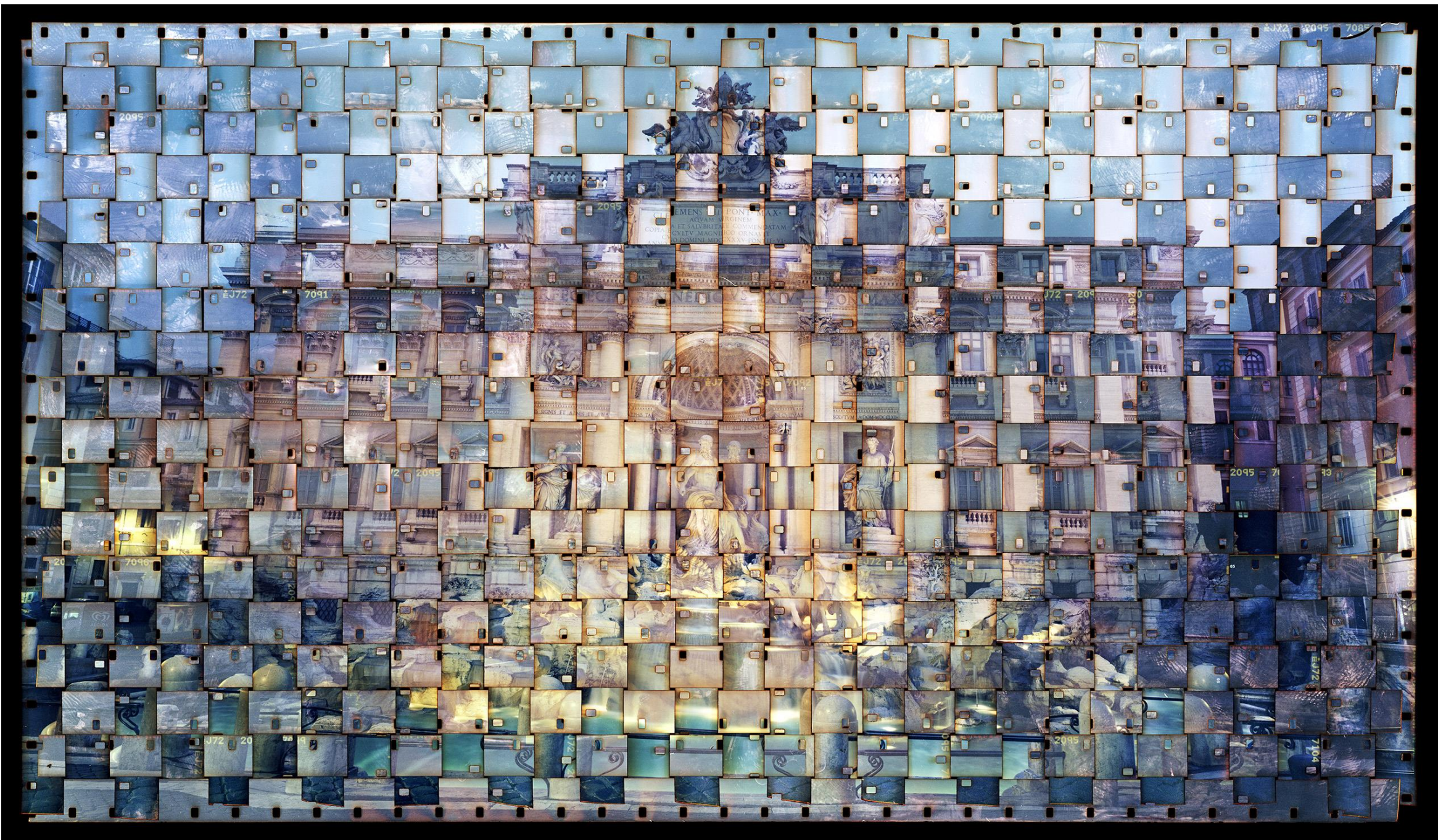




©mu-um



©mu-um



EJ72 2095 7085

2095

7087

2095

EMENS I PONTI MAX-  
ACIARI E COMMERCIAM  
ET SALUBRITATE COMENDATAM  
COHASTI MAGNifico ORNATA  
CIVITATIS ROMANA

EJ72

7091

J72 - 20

2095

2095

2095 - 71

73

20

7096

2095

J72 2

EJ72

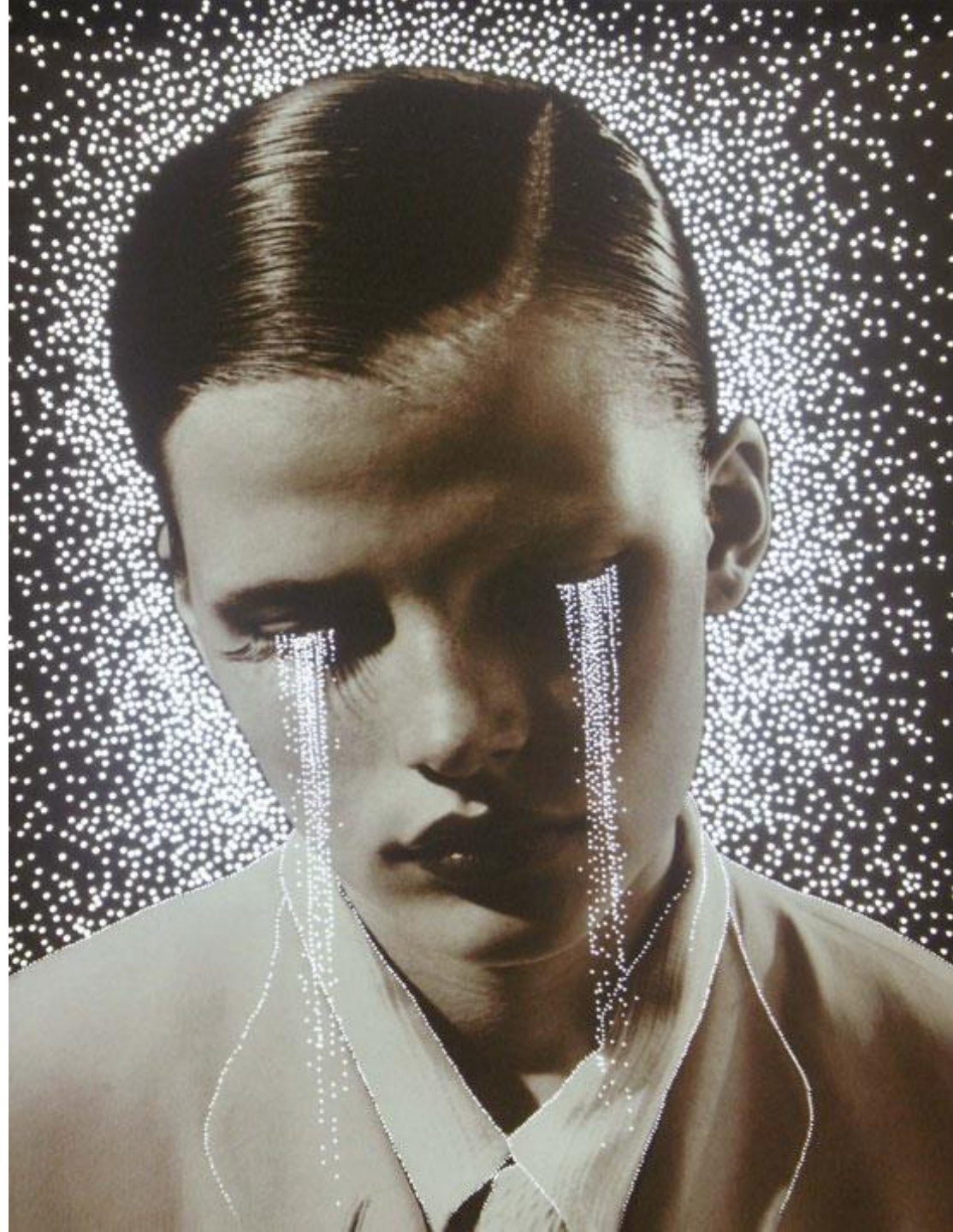
J72 20

2095

7104







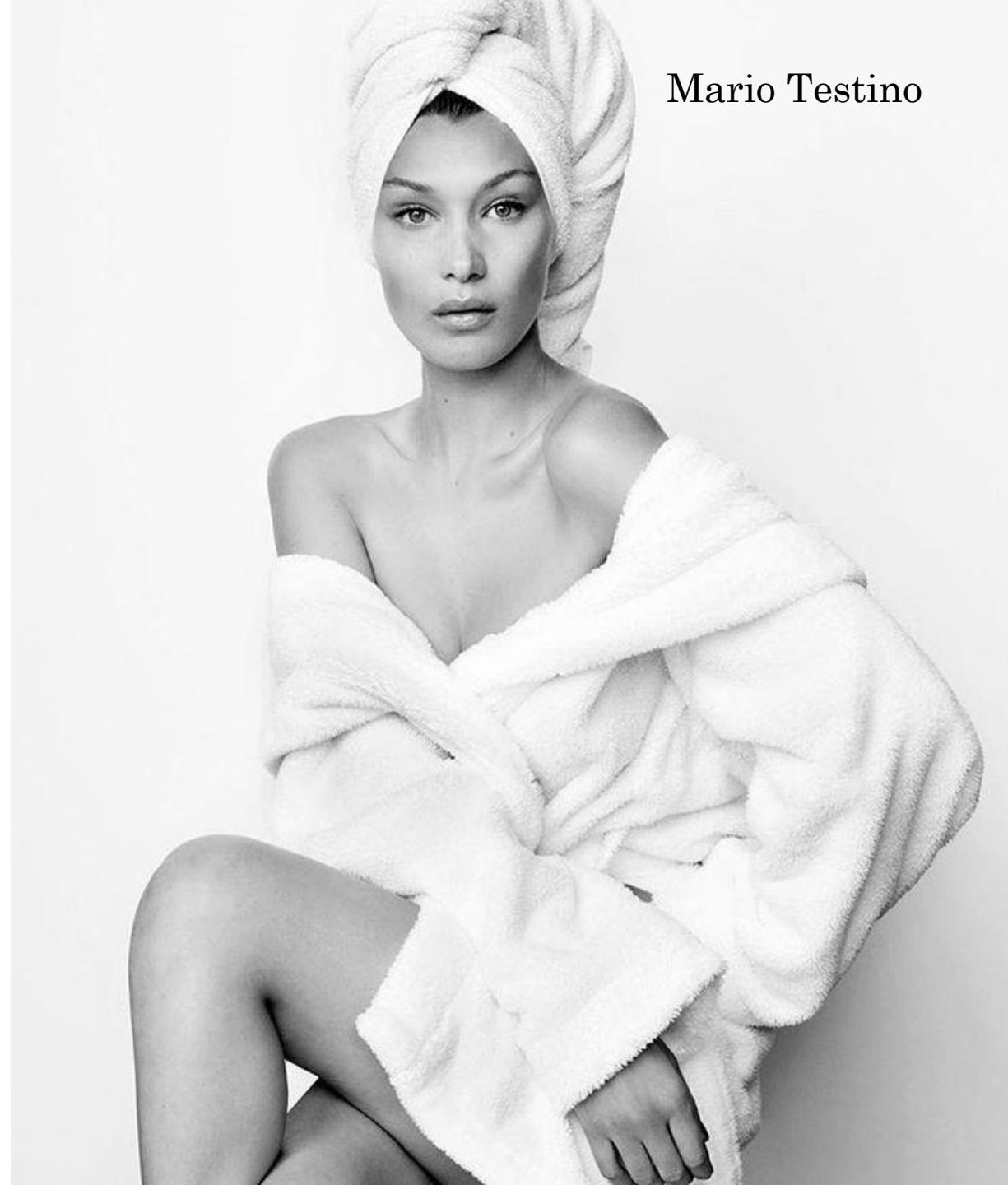








Natalia vodianova

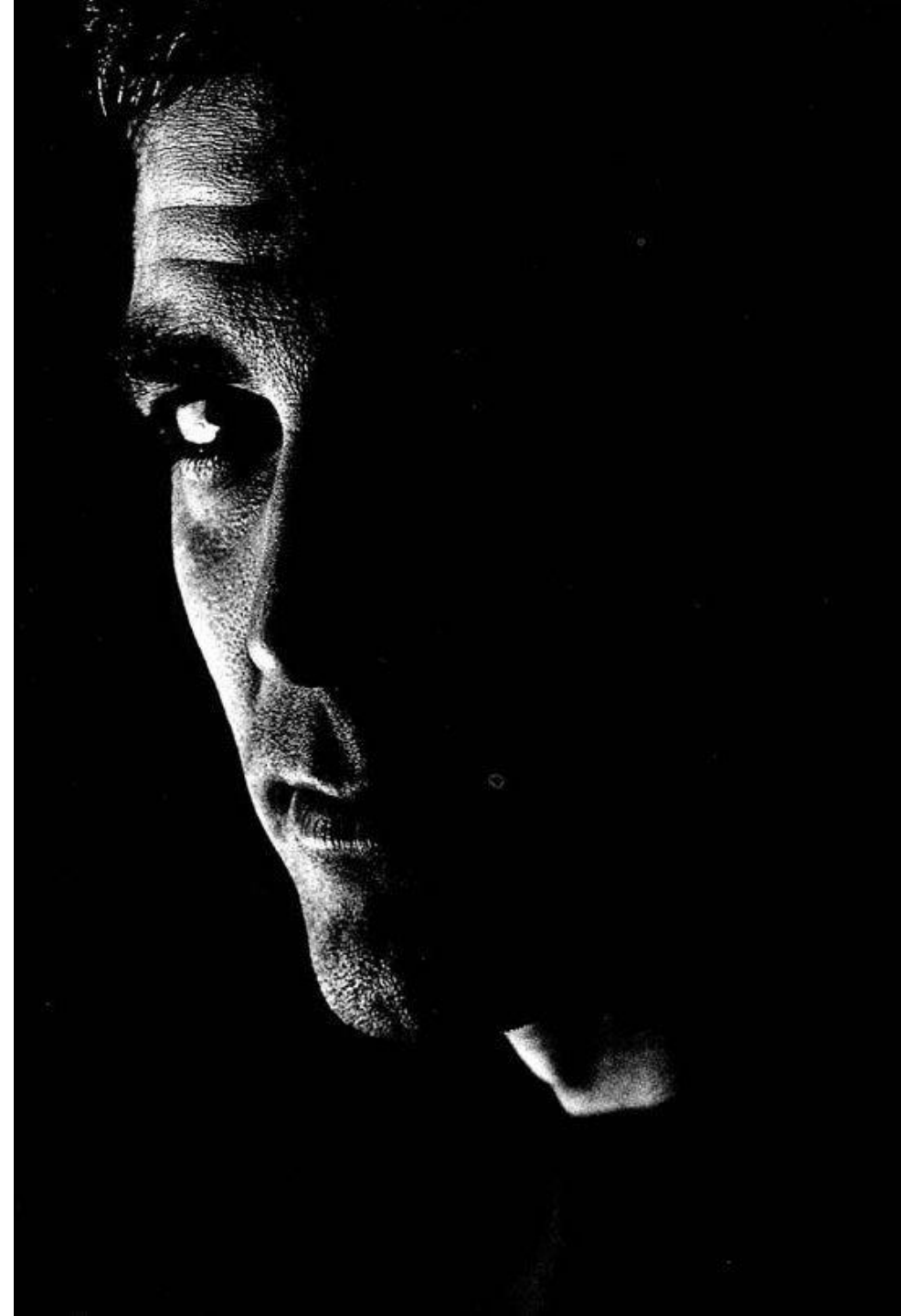


Mario Testino



Quentin Arnaud

Mario Testino























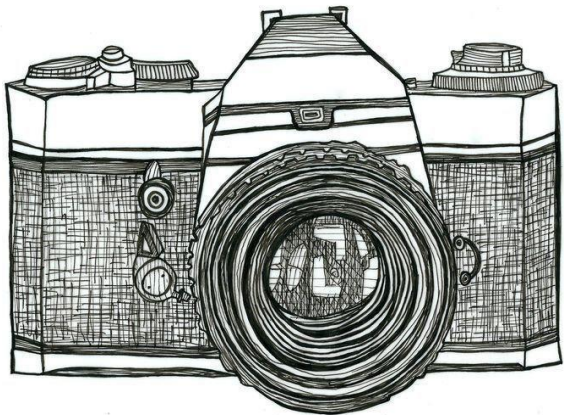
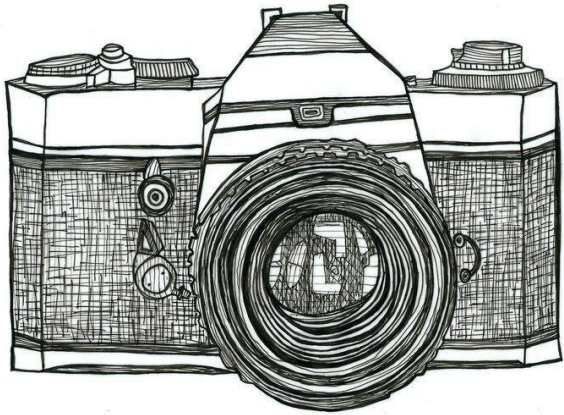
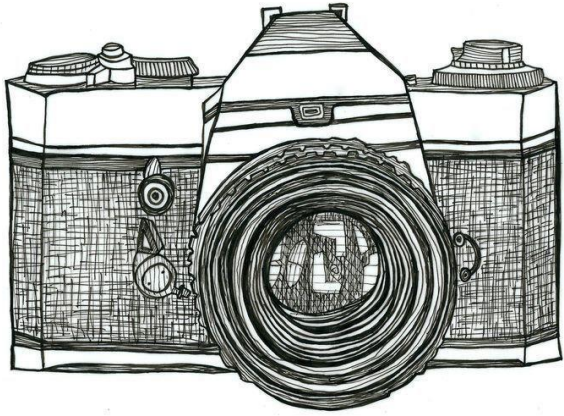




Geoffrey Jones  
reevisual.com.au



# Task...Task...Task...Task...Task...



## Task 1:

Developing from your previous images you must look at a minimum of 2 artists that explore the idea of experimental portraiture and produce research and shoots to reflect that.

Things to remember....

You must ensure that your choice of research backs up your idea and that it leads on from your previous idea....

Remember that it is all about development.